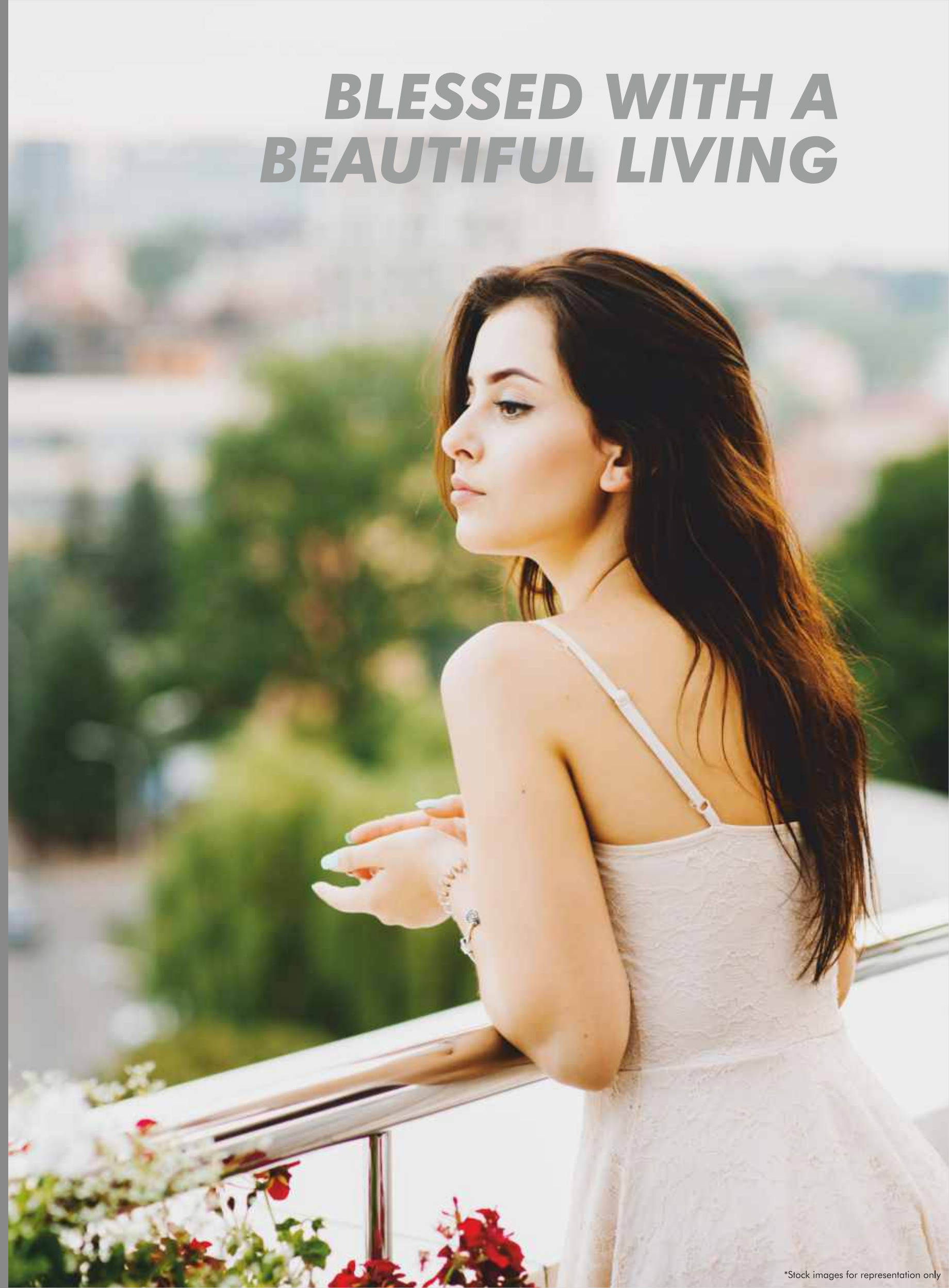


Gini
Belvista
Discover a beautiful life

***BLESSED WITH A
BEAUTIFUL LIVING***



GINI BELVISTA is more than just a residential project; it is a way of life envisioned to give you perfection in every aspect.

Whatever you dream about, spaciousness, connectivity or a life filled with comforts and amenities, this is a project that makes it a reality.

Discover a beautiful life created around your dream.

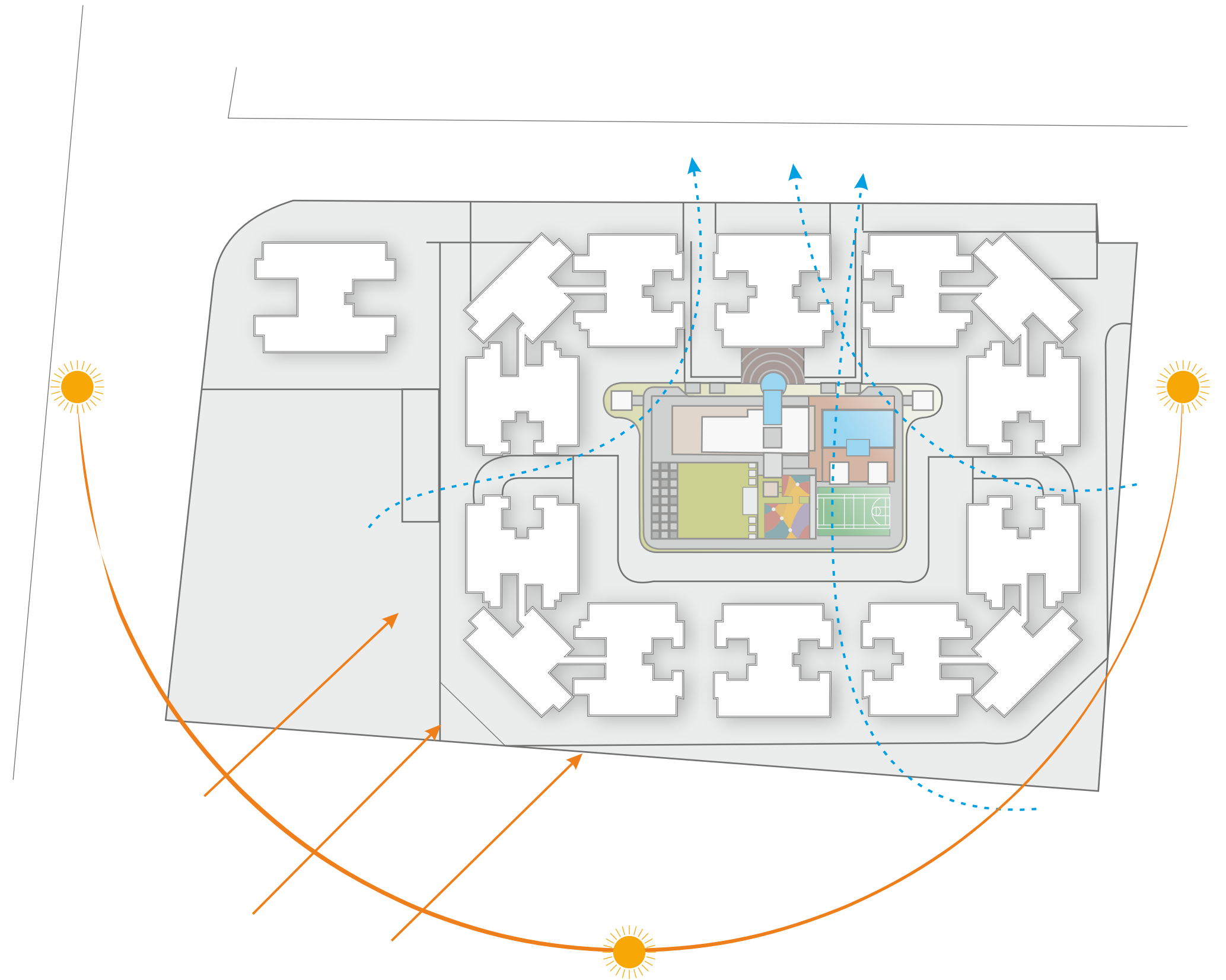
DISCOVER **A HAPPY** **NEIGHBOURHOOD** **BLESSED WITH** **OPEN SPACES**

More space to breathe

As the name itself suggests, GINI BELVISTA is designed to give you an unprecedented access to beautiful views and fresh lifestyle. With this in mind, we have ensured vast amount of open spaces around your home. Now breathe in the fresh environs.

DISCOVER THE DESIGN THAT LETS IN MORE AIR & MORE SUNLIGHT

The central courtyard surrounded by the tall, intelligently placed buildings make GINI BELVISTA a perfect blend of cool breezes and pleasant sunlight. With all the natural elements present, you are sure to feel alive!



DISCOVER THE LOCATION WITH GREAT CONNECTIVITY

The matchless location of GINI BELVISTA gives you the comfort of finding everything you need, within your vicinity. The amazing connectivity offers you the rare opportunity to spend time with your family rather than traffic.



TRANSPORT

Pune Airport - 4.5 Km.
Vishrantwadi - 6.5 Km.
Kalyani Nagar - 8.5 Km.
Pune Station - 11.5 Km.



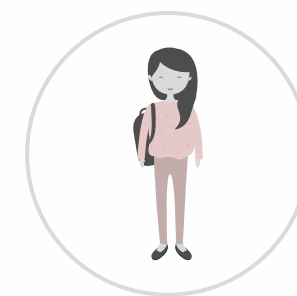
IT COMPANIES

Commerzone - 8.0 Km.
Panchshil Tech Park One - 7.5 Km.
Business Bay - 8.0 Km.
Eon IT Park - 12.0 Km.
World Trade Center - 12.0 Km.
Magarpatta City - 14.5 Km.



RETAIL

Big Bazar - 7 Km.
Phoenix Mall - 8 Km.
Pulse Mall - 8 Km.
Inorbit Mall - 8.5 Km.



EDUCATION

D Y Patil - 1.5 Km.
St. Peters School - 2.0 Km.
Dr. Mar Theophilus School - 2.0 Km.
Pune International School - 5.0 Km.
Indian Institute of Architects - 5.0 Km.



HOSPITAL

Orchid Hospital - 1.5 Km.
Sparsch Orthopaedic - 1.0 Km.
Patil Hospital - 2.0 Km.
Shree Hospital - 3.5 Km.

DISCOVER A PERFECT BLEND OF PRIVACY AND SOCIAL LIFE

The central garden acts as a great venue to gather and mingle with your neighbours while creating an essential sense of privacy by adding distance between the windows. Here you get to be with your peers without sacrificing your privacy.





*Artistic impression.

STREET VIEW @ **GINI BELVISTA**

DISCOVER **A SPLENDID LIFE**

The majestic facade of GINI BELVISTA is truly a sight to behold as it creates an unforgettable impression at the first glance. The outward appearance reflects the promise of a life filled with happiness.





MASTER LAYOUT @ **GINI BELVISTA**

LEGEND

- | | | | |
|------------------|--------------------|---------------------------|------------------------|
| 1. MAIN ENTRANCE | 5. BUFFET AREA | 9. PARTY LAWN | 13. DECK AREA |
| 2. WATER BODY | 6. PATHWAY | 10. YOGA, MEDITATION AREA | 14. FEATURE WALL |
| 3. SIT OUT | 7. SANDPIT AREA | 11. STAGE | 15. MULTIPURPOSE COURT |
| 4. CLUB HOUSE | 8. KIDS' PLAY AREA | 12. SWIMMING POOL | 16. GUEST BEDROOMS |

DISCOVER
FINEST PLANNING



*Artistic impression.

SHOPS @ **GINI BELVISTA**

DISCOVER EASE OF SHOPPING

The convenient retail spaces, at GINI BELVISTA, give you ample opportunities to go out for shopping. Whatever your needs may be, stationary for your kids, your daily needs or the latest fashion, you will find them the moment you step outside of your home.



*Artistic impression.

ENTRANCE @ GINI BELVISTA

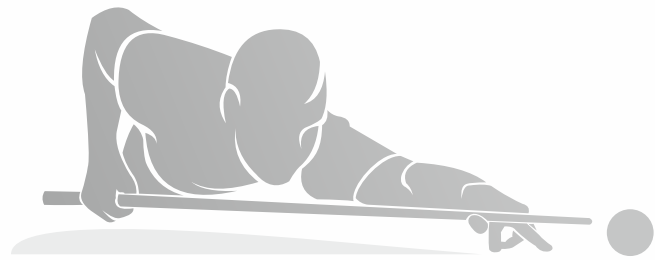
DISCOVER
THE GATES TO BLISS



The entrance to GINI BELVISTA is love at first sight. The buzz of retail shops is an energetic sight to see. Upon stepping inside, a serene sight of the courtyard welcomes you. This is the doorstep where you hang your worries and step into your own paradise.

DISCOVER A HOLISTIC LIFESTYLE THAT CONSISTS OF FUN AND ZEST

When we say that GINI BELVISTA is created to be your perfect home, we are not talking about just a perfect residence. The comforts and leisures embedded in this complex offer you more than a house. They offer you a home filled with happiness.





*Artistic impression.

CLUB HOUSE @ GINI BELVISTA

The clubhouse at GINI BELVISTA is designed to be more than just a place filled with amenities. It is created as a perfect getaway from the daily mundane life to a time of complete relaxation and leisure.

DISCOVER THE FLAVOURS OF LIFE



LIFESTYLE AMENITIES @ GINI BELVISTA

CLUB HOUSE | SWIMMING POOL WITH DECK
MULTIPURPOSE PLAY COURT | BUFFET AREA | PARTY
LAWN | KIDS' PLAY AREA | WATER BODIES
YOGA & MEDIATION AREA | SENIOR CITIZEN AREA



*Artistic impression.

CLUBHOUSE + PLAY AREA @ **GINI BELVISTA**

**DISCOVER THE
JOYFUL SURROUNDINGS**

As each morning floods the clubhouse and play area with blissful sunshine, you get to experience GINI BELVISTA in its full glory. The refreshing scene is sure to invigorate your senses like never before.

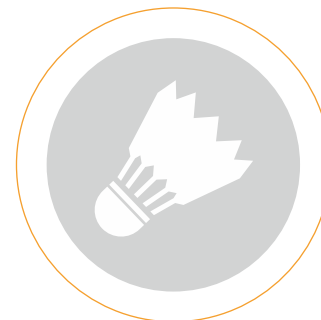


As a parent, you wish nothing else than a perfect childhood for your child and that is why, we have made sure that your child gets more than just a ground to play on. At the dedicated kids zone, watch the love of your life create memories right in front of you.

*Artistic impression.

KIDS ZONE @ GINI BELVISTA

DISCOVER
A PARADISE FOR KIDS





*Artistic impression.

AQUA ZONE @ GINI BELVISTA



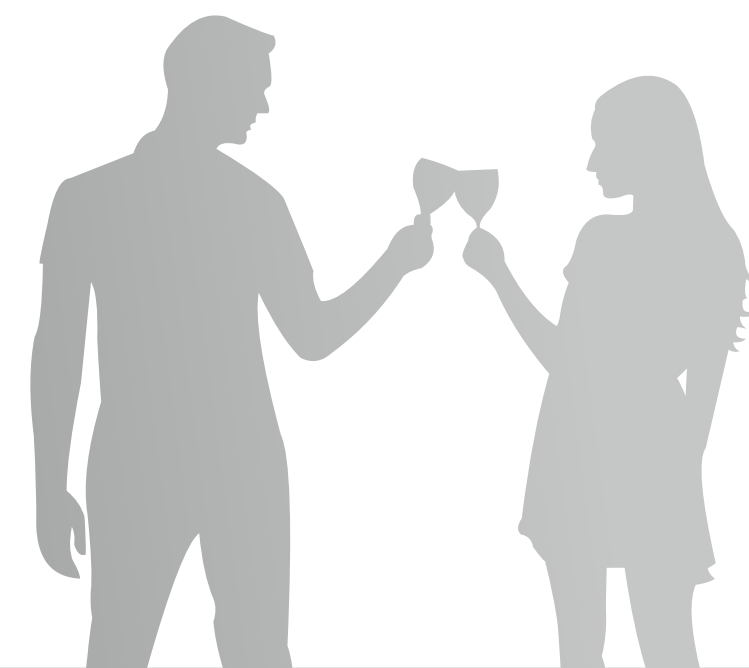
DISCOVER THE
REFRESHING LEISURES



*Artistic impression.

PARTY AREA @ **GINI BELVISTA**

DISCOVER
FRIENDLY NEIGHBOURS



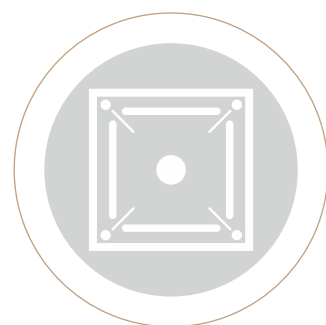
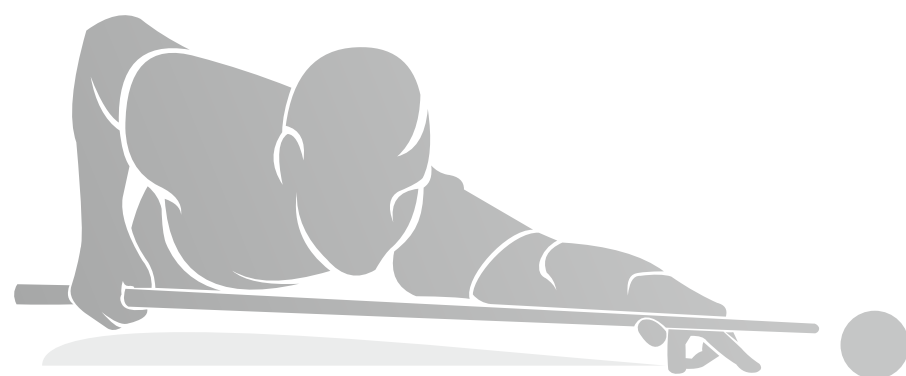
There may be some days where you would prefer the quieter indoors to the exciting outdoors.

GINI BELVISTA gives you that choice. Enjoy the indoor games in plenty at the lavish Club House.



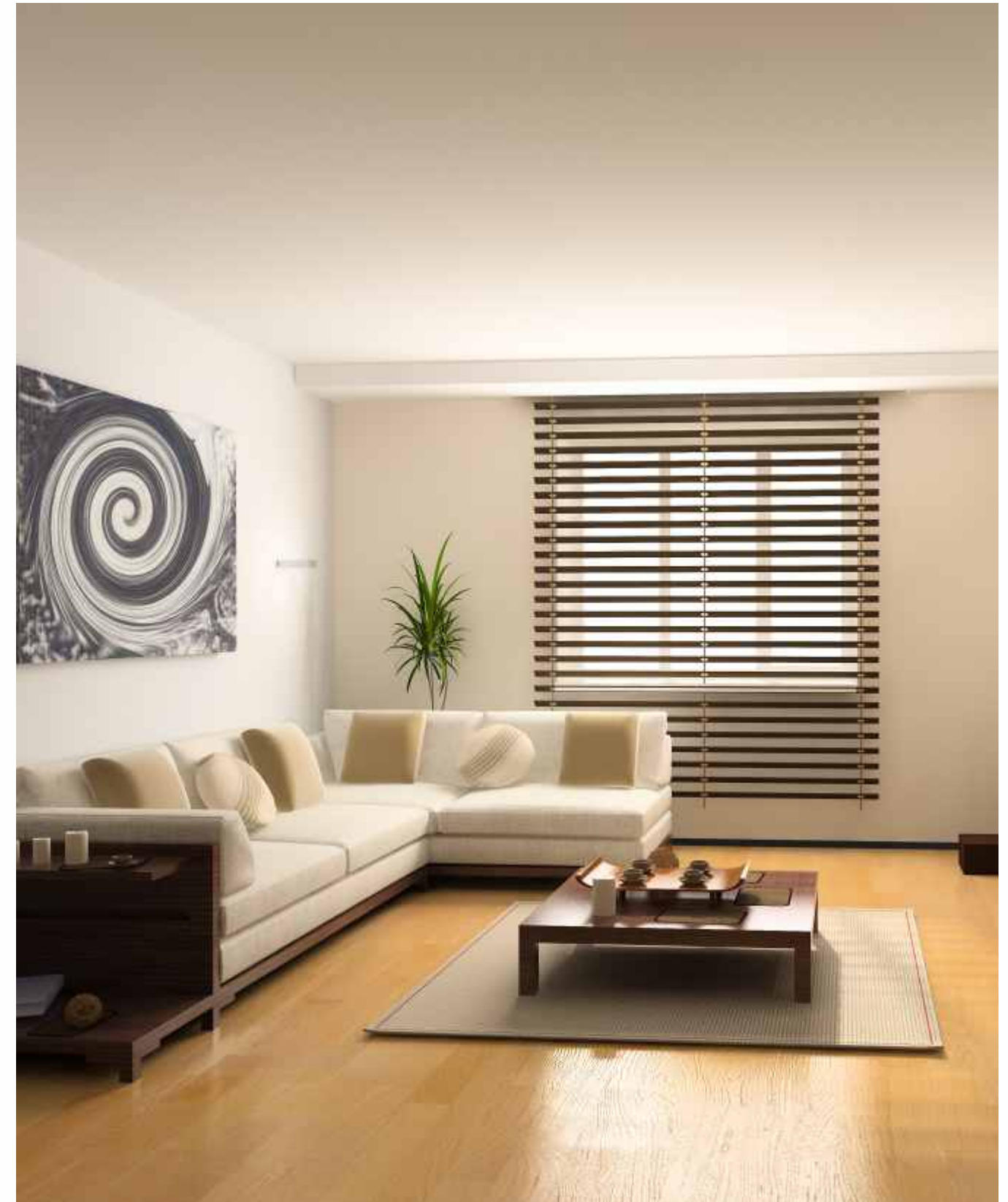
*Artistic impression.

INDOOR ACTIVITIES @ GINI BELVISTA



DISCOVER
ABUNDANT CHOICES

DISCOVER THE HOME YOU ALWAYS WANTED



It's true when they say 'home is where the heart is'. With the unquestionable ability to capture your heart, these residences at GINI BELVISTA are certain to become your home. This is where you can explore the infinite possibilities of living a fulfilling life.



2 BHK APARTMENT

LEGEND

- A** Entrance
- B** Living Room
- C** Dining Area
- D** Kitchen
- E** Dry Terrace
- F** Terrace
- G** Bedroom
- H** Master Bedroom
- I** Bathroom
- J** Master Bathroom

2.5 BHK APARTMENT



LIFESTYLE FEATURES @ GINI BELVISTA



R.C.C.

- Structure Designed with Earthquake Resistant Frame



ELECTRIFICATION

- Concealed Electrical Piping
- Renowned Modular Switches
- Standard ISI Multi-strand Wires with MCB & ELCB
- Provision for AC Point in Master Bedroom
- TV and Telephone Points in Master Bedroom & Living Room



FLOORING

- Wooden Finish Tiles in Master Bedroom
- Vitrified Tiles in rest of the Apartment
- Dado Tiles for Bathrooms and Kitchen
- Anti-skid Tiles for Bathrooms & Terraces



DOORS

- Modular/Laminated Doors with CP Fittings



KITCHEN

- Marble / Granite Platform
- Stainless Steel Sink
- Dado Tiles up to 4' Height
- Provision for Exhaust Fan
- Provision for Water Purifier
- Provision for Washing Machine in Dry Balcony



WALL FINISH / PAINT

- P O P/ Gypsum Wall Finish
- O B D Paint for Interiors
- Acrylic Emulsion Paint for Exteriors

DISCOVER THE PERFECTION IN EVERY DETAIL



WINDOWS

- Black Granite Window Sill
- Window Grills
- Aluminum Windows with Mosquito Net
- Aluminum Sliding Doors for Terraces



BATHROOMS/TOILETS

- Concealed Plumbing
- Single Lever Diverter
- Health Faucet
- Bathroom Glazing up-to 7' Height
- Black Granite Door Frames
- Solar Heated Water for Master Bathroom
- Provision for Electric Geyser
- Provision for Exhaust Fan



UTILITIES

- Sewage Treatment Plant
- Organic Waste Converter
- Rainwater Harvesting
- Water Recycling for Garden and Flushing
- Generator Backup for Common Passages & Utilities
- Provision for Inverter in Each Apartment
- Underground and Overhead Tanks for Water Storage
- Firefighting System
- Tremix Concrete Roads
- Anti-termite Treatment for Building structure



SECURITY

- Video Door Phone for Each Apartment
- CCTV Cameras for Selected Areas
- Security Cabin



At Gini, we believe that the place of a true market leader lies in the hearts of satisfied customers. For us, excellence is achieved by competing with ourselves and by a complete dedication to our customers. It is this belief of ours, that has driven us to consistently deliver projects that are of superlative quality in every aspect.

Within 10 years, since we entered the real estate sector of Pune City in 2007, we have been able to create a legacy of innovative and futuristic landmarks. Since then we have built over 1 million sq ft of residential and commercial spaces in Mumbai, Ahmedabad and Pune. However, what gives us our biggest sense of pride is our relationship with the 1000+ happy families and many more satisfied customers. It is their happiness and support that motivates us to conquer new heights and achieve new milestones.



2007: GINI SANSKRUTI
@ HADPSAR, PUNE

The place which encompasses the native and traditional architecture with a blend of nature. It's an integrated residential complex of 2BHK & 3BHK apartments adding up to 384 units.



2009: GINI BELLISSIMO
@ DHANORI, PUNE

A residential project spread across five acres, embracing the modern comforts. The complex has 2BHK & 2½ BHK Apartments and Penthouses adding up to 276 units.



2011: GINI BELLINA
@ LOHEGAON, PUNE

Elegantly crafted apartments equipped with modern amenities and impressive features make a perfect dream home. The complex has spacious and airy 1 ½, 2 and 2 ½ BHK apartments adding up to 188 units.



2012: GINI VIVIANA
@ BALEWADI, PUNE

'Viviana' in Italian means vibrant and full of life. The complex houses 6 towers having spacious 2BHK, 2 ½ BHK & 3BHK apartments adding up to 226 units.



2012: Gini Lake Gardenz
@ S.G. Highway, Ahmedabad

A luxurious residential complex of 3 BHK apartments and penthouses. The complex consists of four towers of 12 stories each, adding up to 88 units.



2014: Harlalka Heights
@ Mumbai

A luxurious 16 Stories tower, adding up to 33 units.



2018: Gini Aria
@ Yeolewadi, Pune

A harmonious blend of lifestyle options; from comfortable 1 BHK to opulent 2 BHK apartments situated in elegantly landscaped greens.

- A PROJECT BY -



GINI CITICORP REALTY LLP

&



SITE ADDRESS

Survey No.11/1 Part, D. N. Parande Park, Near Porwal Road, Dhanori Pune - 411015

ADMIN OFFICE

3E, Gulmohar Apartment, 1st Floor, C Wing, 2420, East Street, Camp, Pune 411 001.
Tel: (020) 6687 4444 Email: pune@giniconstructions.com

CORPORATE OFFICE

421 Jogani Industrial Premises, Off. N. M. Joshi Marg, Lower Parel (E), Mumbai - 400 011.

For bookings contact: 7538 000 333, 7538 000 444

email: belvista.sales@giniconstructions.com | www.giniconstructions.com



Gini Belvista Phase 1 (Wing A, E & F)
R. NO. : P52100018898
Available on
<https://maharera.mahaonline.gov.in>



C R E D I T S

DESIGN ARCHITECT



R.C.C. CONSULTANTS



LANDSCAPE DESIGNER



MEDIA

